

ORE PROCESSING

ARC COATINGS FOR THE ORE PROCESSING INDUSTRY



Protecting Your Equipment

Chesterton® ARC Efficiency and Protective Coatings provide reliable abrasive wear and corrosion protection for your plant's critical equipment and structures. Our process knowledge and state-of-the-art materials technology, supported by local expertise and service, have been proven in the extraction and processing of copper, nickel, iron, potash, phosphate, coal, gold, and bauxite as well as other ores around the world.

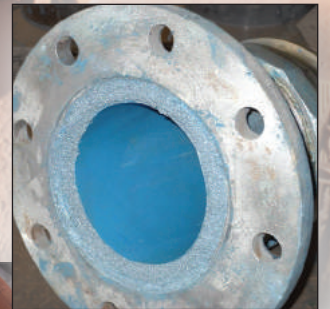
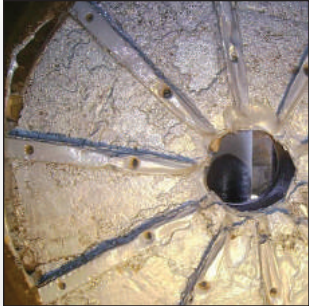


Crushing

ARC I BX and MX series

Ceramic reinforced epoxy/urethane hybrid coatings.

Protects slurry and dry treatment transport systems from moderate to severe impact and sliding "two body" abrasion. Application areas include screen decks, feed and discharge chutes, scrubbers, sumps, pumps, as well as slurry pumps.



Grinding

ARC S and BX series

Ceramic and glass flake reinforced coatings.

Protects the exposed surfaces of feed wells, hydro cyclones, discharge sumps, and overflow troughs from mild to severe chemical corrosion and sliding abrasion.



and Improving Reliability



Concentration/De-watering

ARC BX, I BX, and MX series

Ceramic reinforced epoxy and epoxy/urethane hybrid coatings.

Protects slurry concentration, thickening, and transport equipment such as agitators, tanks, and overflow troughs, as well as slurry pumps and piping.



Separating

ARC S, BX, and MX series

Modified epoxy formulation, reinforced with a proprietary blend of ceramic beads and powders.

Protects process equipment such as clarifier walls, rake arms, discharge cones, underflow pumps, flotation cells, transport pumps and piping from chemical corrosion, and sliding abrasion.



AREA	EQUIPMENT	BX1	I BX1 I BX1 RC	BX2	BX5	MX1	MX2	T7 AR	858	855	S2	SD4i	HT-T	HT-S	CS2	791	CS4	988	NVE VC	NVE
CRUSHING	Surge bins	x	x	x	x	x			x	x		x								
	Crusher discharge	x	x	x	x	x														
	Screen deck	x	x	x	x	x				x	x	x								
GRINDING	Feed trunnion	x	x	x		x														
	Pulp lifter plate	x	x	x		x														
	Discharge trunnion	x	x	x		x														
	Hydro-cyclone	x	x	x		x														
	Hydrocyclone sump	x	x	x	x															
	Slurry pump	x	x	x		x	x													
	Vibrating screens	x	x	x	x	x						x	x							
	Scrubber	x		x	x							x	x							
	Wash screens	x	x	x						x	x	x								
SEPARATING	Banana screens	x	x						x	x	x	x								
	Slurry pipe/elbows/spools	x	x			x	x													
	Spiral classifier screw	x	x	x	x	x	x		x			x								
	Spiral classifier trough	x	x	x	x	x	x		x			x								
	Agitators	x	x	x	x	x	x	x		x		x								
	Rougher cell			x	x					x		x								
	Flotation cell			x	x					x		x								
	Concentrator tank			x	x					x	x	x								
	Reaction tank			x	x			x				x								
	Dense medium separator	x		x	x	x	x					x	x							
	Magnetic separator	x		x	x	x	x					x	x							
	Thickener tanks	x		x	x					x	x	x			x	x	x	x	x	x
	Distribution drum			x	x					x	x	x								
	Discharge cone	x	x	x	x	x	x	x		x		x								
Underflow pump	x	x	x	x	x	x	x		x											
Clarifier											x	x		x	x	x	x	x	x	
Weir and overflow trough									x	x	x			x	x	x	x	x	x	
Rake arm blades	x	x	x		x	x	x					x								
DEWATERING	Centrifuge	x	x	x	x	x	x			x		x								
	Filter press	x								x	x	x								
	Transfer screw	x	x	x		x														
	Rotary filters								x	x										
	Vacuum pumps			x			x		x	x		x								
	Crystalizer							x						x	x					
	Evaporators							x						x	x					
TAILINGS DISPOSAL	Tailing pumps	x	x	x		x														
	Tailing pipe/elbows/spools	x	x	x		x														
	Paste fill bins	x	x	x		x						x								
	Pug mill mixer blade	x	x			x														
	Paste fill pipe	x		x		x	x													
	Pump bases															x	x	x	x	x
	Drainage trenches/sumps															x	x	x	x	x
Secondary containment															x	x	x	x	x	

Disclaimer: This table reflects general guidelines for product selection. Do not rely on this table as sole method to select products. It is recommended that a detailed ARC application survey be completed to properly assess severity of application and ensure a proper ARC material recommendation.

Chesterton ISO certificates available on www.chesterton.com/corporate/iso

Distributed by:

Technical data reflects results of laboratory tests and is intended to indicate general characteristics only. A.W. Chesterton Company disclaims all warranties express, or implied, including warranties of merchantability and fitness for a particular purpose. Liability, if any, is limited to product replacement only. Any images contained herein are for general illustrative or aesthetic purposes only and are not intended to convey any instructional, safety, handling or usage information or advice respecting any product or equipment. Please refer to relevant Safety Data Sheets, Product Data Sheets, and/or Product Labels for safe use, storage, handling, and disposal of products, or consult with your local Chesterton sales representative.

© 2017 A.W. Chesterton Company.
 ® Registered trademark owned and licensed by A.W. Chesterton Company in USA and other countries, unless otherwise noted.



A.W. Chesterton Company
 860 Salem Street
 Groveland, MA 01834 USA

Telephone: 781-438-7000
 Fax: 978-469-6528
www.chesterton.com

Form No. EN22963
 ARC Ore Processing Brochure – English
 1/17